

F70918 Light Floral Stitches for Baskets & More Instructions on how to make oblong basket.

Project Needs:

Sewing Machine

Clothesline rope: Made from Soft material, ¼" thickness

Open sewing machine foot, to help see what you are sewing

Scissors

Ruler

Tear Away stabilizer

Temporary Adhesive

Thread, to sew the clothesline together and matching bobbin thread

Erasable Marker

Fabric Glue or Elmer's glue

Painters Tape or freezer tape

Instructions:

1. **Select a wide zig zag stitch on your sewing machine (about 1/8"). Use a notched out foot, so your center line is more visible.**
2. **Measure out 5" of your clothesline.**

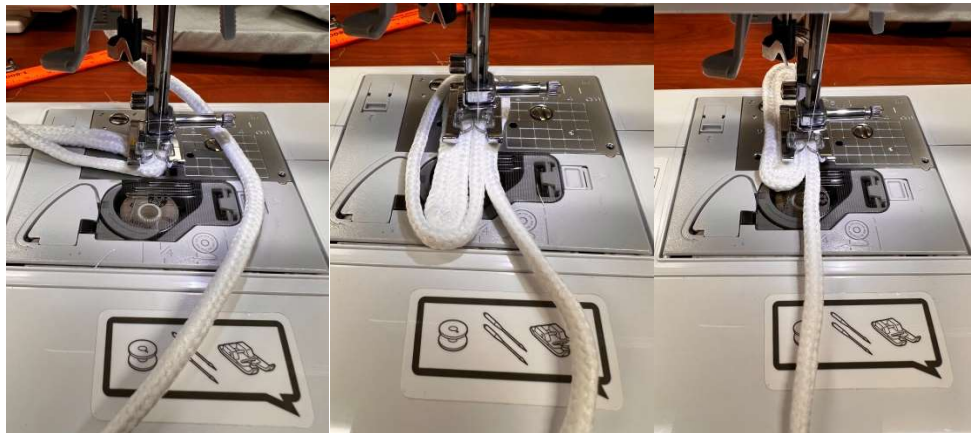


3. **Bend the clothesline in half to make an oblong loop and pin. You should have 2 1/2" from the tip of the loop to the end of the rope.**



Bend the robe again to make another loop around and pin all three together. The tail end of the rope, which is in the middle of your loop, should be pointing up, so that

when placed in the sewing machine your robe is going clock wise. Using a zig zag setting, stitch the tail-end of the robe to the first loop (picture 3 below). Continue stitching the rope together. You will need to raise your foot, so you can maneuver around the corner.



4. Continue stitching clockwise, until you reach the desired size of the bottom of the bowl you wish to have. Make sure that it is at least 1 inch larger than your embroidery design. Our example is approximately $7\frac{1}{2}'' \times 9\frac{1}{2}''$.
NOTE: Before continuing you may want to check your bottom and make sure all the seams are zig zagged together. If you see a spot that is missed, just zig zag it together.
5. Measure both horizontally and vertically to find the center and mark it (using tape or an erasable fabric pen).



6. Hoop your tear away stabilizer in a large hoop.
7. Place your bowl bottom on the stabilizer (nice side up). Once you think it is centered in the hoop spray the stabilizer with temporary adhesive and place the bowl bottom on the stabilizer. Place tape to help secure the edges to the stabilizer.
Note: If your clothesline bottom does not lay completely flat, it is okay. The stitches in our designs are light, and it will not affect the outcome of the design.
8. Choose your embroidery design and set up your embroidery machine with thread.
9. Place your hoop in the embroidery machine. Set the machine so it is lined up to the center mark on your clothesline (if you used tape to mark the center, remove before embroidering). Note: the remaining length of unstitched clothesline should be positioned out of the way and on a clean surface while embroidering).
10. Embroider design



11. Take out of hoop and tear the stabilizer away from the bottom of bowl.
12. Place back into the sewing machine and continue zig zagging the clothesline clockwise. This time you will lift the bottom piece up towards the sewing machine while zig zagging. This creates the sides of the bowl.



13. Continue zig-zagging until the bowl is at the height you want. The example is about 7 rows from the bottom. On the 8th row you will be creating the handles.



- 14. When you've reached your desired height of the bowl, mark where you want to place the handles with an erasable pen. Zig Zag up to the first mark and stop. Pull the clothesline until you achieve the desired length you want for the handle, measure it (so you know how long to make the 2nd handle) and pin in place.**





15. At the pin, continue zig zagging until you reach the other handle mark and pull out the length of rope for the handle, pin in place, and zig zag approximately 1 inch past the pin and stop sewing.
16. You will cut the clothesline at an angle approximately 1" past the last zig zag stitch.
Note: Cut the angle down towards the basket.
17. Glue the loose piece to the top of the basket. You may have frayed edges but the glue will help smooth them out. Once the glue is dry, reinforce it with a zig zag stitch. The bowl is done.



18. You can embellish the end of the basket to cover up the angled edge or just leave it. Pop the center of the bottom in to create a lip for the bowl to lay flat. Once again check your bowl for any seams you may have missed and zig zag together.

